

## wall starters 20A

Wall starters are designed to be fitted to the wall to start the soft wiring circuit. Each wall starter is fitted with a Wieland GST 18/3 starter and inbuilt locking mechanism. Termination is made from underneath the plate.\* The termination block will allow for the looping of 2.5mm<sup>2</sup> or the single termination of 4mm<sup>2</sup> cable.



Product Number	Description
150631	WALL MOUNT STARTER GST S-ENT - White
150630	WALL MOUNT STARTER GST S-ENT - Black
148063	WALL MOUNT STARTER GST S-ENT - Red *requires a hybrid lead, 148053 2000mm

## surface starters - side entry 20A

The surface mount starter is designed for locations where cable access underneath the wall plate is not possible, but fixture of a soft wiring starter is required. Cable access to terminate the surface mount starter is gained from the rear of the mounted starter instead of underneath the plate.\* Twin and Earth 2.5mm<sup>2</sup> cable can be wired directly into the back of the starter.\*



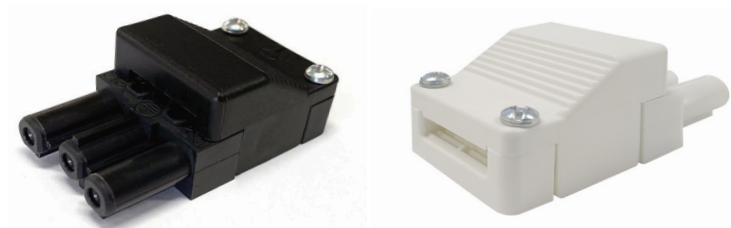
Product Number	Description
148036	SURFACE MOUNT STARTER GST S-ENT - White
148037	SURFACE MOUNT STARTER GST S-ENT - Black
148065	SURFACE MOUNT STARTER GST S-ENT - Red *requires a hybrid lead, 148053 2000mm

\*The termination of and connection to all starter sockets must be performed by a licensed electrician.  
Installation couplers must not be connected or disconnected under load.

Wieland GST18/3 connectors are compliant with Australian and New Zealand standards AS/NZS61535

The starter socket is designed so that TPS (Twin and Earth 2.5mm<sup>2</sup> cable) can be wired directly into the back of the starter.\* Starters sockets are a soft wiring connector that is small enough for use in **ceilings, under raised flooring, in most ducted wall skirtings, inside partitions or screens**, and similar positions where space is limited, and a surface mounted wall starter is not practical.

## starter sockets 20A - Suited to ceilings and floor boxes



Product Number	Description
150620	STARTER SOCKET FEMALE TPS 20A GST - Black
150621	STARTER SOCKET FEMALE TPS 20A GST - White

## starter sockets slimline 20A



Product Number	Description
150629	STARTER SOCKET SLIMLINE FEMALE 20A GST - Black
150635	STARTER SOCKET SLIMLINE FEMALE 20A GST - White

## starter cable 10A, thermal overload

10A starter cables are fitted with a thermal overload for overload protection. One end is fitted with a 10A three pin plug and the other is fitted with a Wieland GST18 female connector.



Product Number	Description
344000	STARTER CABLE 10A 2000mm Lead with Thermal Overload 3PP - Black
344001	STARTER CABLE 10A 2000mm Lead with Thermal Overload 3PP - White
344002	STARTER CABLE 10A 3000mm Lead with Thermal Overload 3PP - Black
344003	STARTER CABLE 10A 3000mm Lead with Thermal Overload 3PP - White

\*The termination of and connection to all starter sockets must be performed by a licensed electrician. Installation couplers must not be connected or disconnected under load.

Wieland GST18/3 connectors are compliant with Australian and New Zealand standards AS/NZS61535